



# East Jackson Comprehensive High School Accountability Report Fall 2010



*...committed to the  
relentless pursuit of  
educational  
excellence!*

# System & School Goals

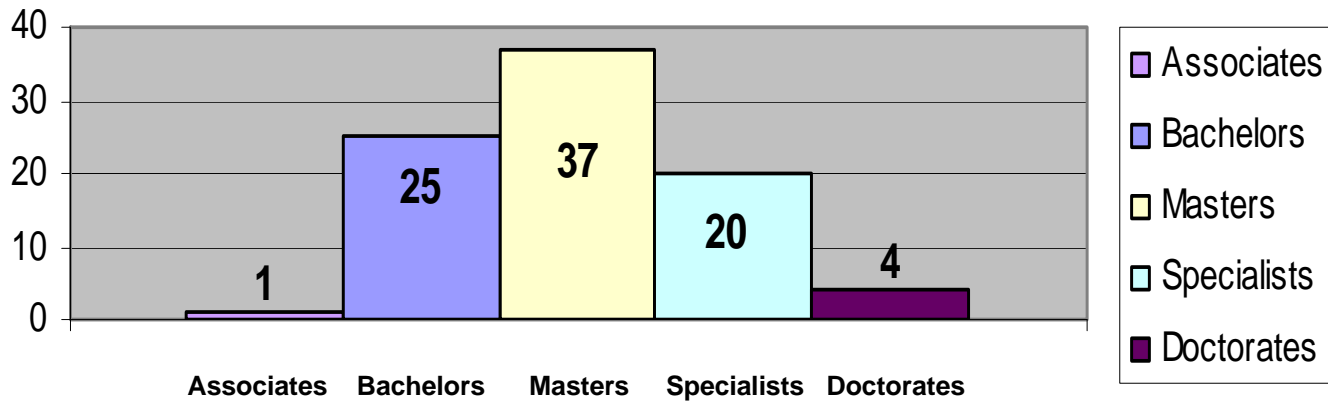
- Jackson County Schools will increase the graduation rate to meet or exceed N.C.L.B standards.
  - *EJCHS will increase the graduation rate to meet or exceed N.C.L.B. standards.*
- All students will reach high standards.
  - *By Spring, 2012, EJCHS will increase the percentage of students exceeding proficiency standards by 3 % each year.*
- Students will exhibit characteristics of good citizenship.
  - *EJCHS students will exhibit characteristics of good citizenship.*
    - *Decrease the percentage of students who miss 15 or more days per school year.*
    - *Monthly attendance will meet or exceed 95%*
    - *Discipline referrals resulting in out of school suspension will decrease by 3% each year*
- Jackson County Schools will provide evidence that 90% of all stakeholders have received sufficient communication from the school system.
  - *Improve communication among parents, community, staff, and administration*



# EJCHS Student Demographics

	Oct 2007	Oct 2008	Oct 2009	Oct 2010
Total Enrollment	891	976 (+83)	995 (+19)	992 (-3)
White	748 (84%)	819 (84%)	804 (81%)	767 (77%)
Black	70 (8%)	77 (8%)	74 (8%)	71 (7%)
Multi-racial	1 (<1%)	8 (<1%)	19 (2%)	42 (4%)
Hispanic	50 (6%)	51 (5%)	67 (7%)	79 (8%)
American Indian	4 (<1%)	0	2 (<1%)	5 (<1%)
Asian	18 (2%)	19 (2%)	23 (2%)	28 (3%)
Free & Reduced Lunch	49%	61%	56%	60%
Special Education	166 (18.6%)	151 (15.5%)	171 (17.1%)	152 (15.4%)

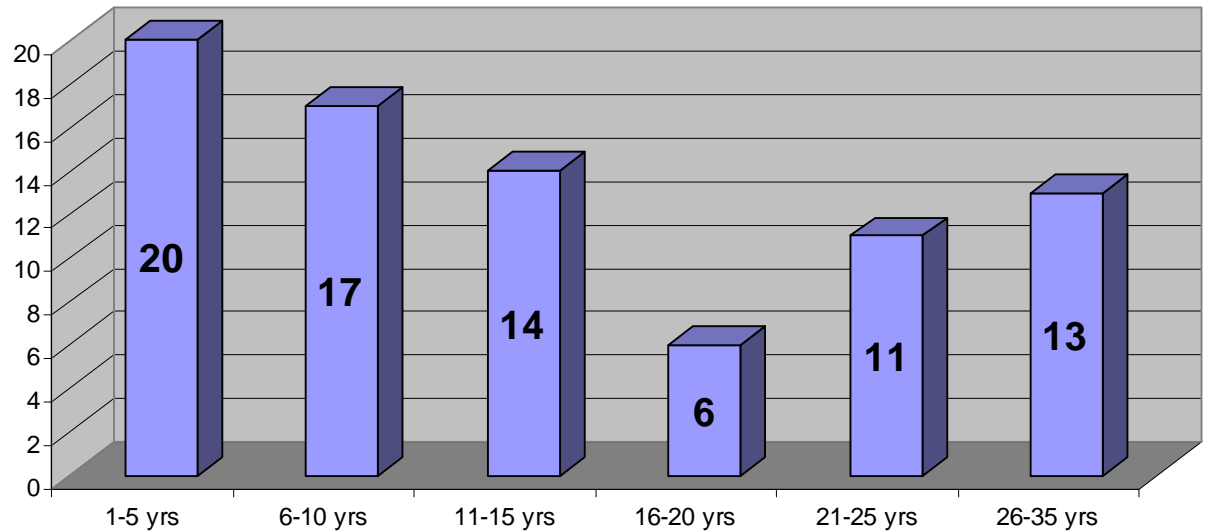
### Degree Levels



### Degree Levels

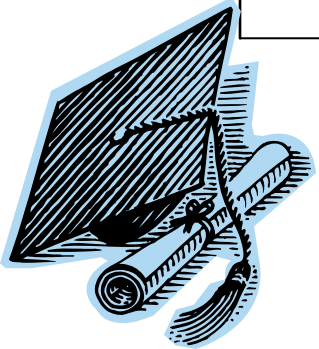
### Years Experience

### Years Experience



# Graduation Rate

Goal Area	Performance Objective	Subgroups	2008	2009	2010	Goal 2011	Goal 2012														
<b>Student Achievement</b>	<table border="1"> <thead> <tr> <th>Year</th> <th>Goal</th> </tr> </thead> <tbody> <tr> <td>2007</td> <td>65%</td> </tr> <tr> <td>2008</td> <td>70%</td> </tr> <tr> <td>2009</td> <td>75%</td> </tr> <tr> <td>2010</td> <td>80%</td> </tr> <tr> <td>2011</td> <td>85%</td> </tr> <tr> <td>2012</td> <td>90%</td> </tr> </tbody> </table>	Year	Goal	2007	65%	2008	70%	2009	75%	2010	80%	2011	85%	2012	90%	All	N/A	N/A	N/A	85%	90%
		Year	Goal																		
		2007	65%																		
		2008	70%																		
		2009	75%																		
		2010	80%																		
		2011	85%																		
		2012	90%																		
Economically disadvantaged	N/A	N/A	N/A																		
Students with disabilities	N/A	N/A	N/A																		
African American students	N/A	N/A	N/A																		
Hispanic students	N/A	N/A	N/A																		
White students	N/A	N/A	N/A																		



Dark Green indicates 2012 goal met.

Blue indicates goal for 2012 not met but equal to or greater than 3% increase over previous year.

Yellow indicates goal for 2012 not met and  $\pm 2\%$  change from previous year.

Red indicates  $\geq 3\%$  decrease in achievement from previous year.

+Indicates GHS GT above state average.

^ School goal based on 2008 base line for EJCHS. Projected at 3% gain per year

Goal Area	Performance Objective	Performance Indicator	Grades	Subject	2008 GPS	2009 GPS	2010 GPS	2011 GPS	2012 GPS	Goal 2012		
Student Achievement	By Spring, 2012, EJCHS will increase the percentage of students exceeding proficiency standards by 12% in every academic area by grade level.	GHS GT: % of students at Advanced Proficiency Honors	11	English Language Arts	46%	49%	50.5%			^ 58%		
		EOCT: % of students at Exceeds	9		21%	32%+	29%			33%		
			11		27%	23%	31.4%+			39%		
		GHS GT: % of students Passing	11		84%	91%+	80%					
		EOCT: % of students Passing	9		70%	83%+	82%+					
			11		84%	91%+	83%					

Dark Green indicates 2012 goal met.

Blue indicates goal for 2012 not met but equal to or greater than 3% increase over previous year.

Yellow indicates goal for 2012 not met and  $\pm 2\%$  change from previous year.

Red indicates  $\geq 3\%$  decrease in achievement from previous year.

+Indicates GHS GT above state average.

Goal Area	Performance Objective	Performance Indicator	Grades	Subject	2008	2009	2010	2011	2012	Goal 2012	
Student Achievement	By Spring, 2012, EJCHS will increase the percentage of students exceeding proficiency standards by 12% in every academic area by grade level.	GHS GT: % of students Pass Plus	11	Mathematics	45%	37%	48%	GPS	GPS	57%	
		EOCT: % of students at Exceeds	Algebra QCC		49%	35%+					
			Geometry QCC		40%	36%+	4%				
			Math I GPS				9%		15%		
			Math II GPS				6%		12%		
		GHS GT: % of students Passing	11		92%	96%+	85%				
		EOCT: % of students Passing	Algebra		84%	78%+					
			Geometry		90%	90%+	72%				
			Math I				63%				
			Math II				62%+				

Dark Green indicates system 2012 goal met.

Blue indicates goal for 2012 not met but equal to or greater than 3% increase over previous year.

Yellow indicates goal for 2012 not met and  $\pm 2\%$  change from previous year.

Red indicates  $\geq 3\%$  decrease in achievement from previous year.

+Indicates GHS GT  $\geq$  state average.

^ School goal based on 2008 base line for EJCHS. Projected at 3% gain per year

Goal Area	Performance Objective	Performance Indicator	Grades	Subject	2008 GPS	2009 GPS	2010 GPS	2011 GPS	2012 GPS	Goal 2012		
Student Achievement	By Spring, 2012, EJCHS will increase the percentage of students exceeding proficiency standards by 12% in every academic area by grade level.	GHS GT: % of students at Advanced Proficiency/Honors	11	Science	43%	43%	57%+			37% ^55%		
		EOCT: % of students at Exceeds	Biology		31%	33%+	36%+			30% ^43%		
			Phy. Sci		35%	50%+	56%+			47%		
		GHS GT: % of students Passing	11		87%	89%+	88%					
		EOCT: % of students Passing	Biology		72%	75%+	81%+					
			Phy. Sci		77%	83%+	88%+					

Dark Green indicates 2012 goal met.

Blue indicates goal for 2012 not met but equal to or greater than 3% increase over previous year.

Yellow indicates goal for 2012 not met and +2% change from previous year.

Red indicates  $\geq 3\%$  decrease in achievement from previous year.

+Indicates GHSGT above state average.

Goal Area	Performance Objective	Performance Indicator	Grades	Subject	2008	2009	2010 GPS	2011 GPS	2012 GPS	Goal 2012		
Student Achievement	By Spring, 2012, EJCHS will increase the percentage of students exceeding proficiency standards by 12% in every academic area by grade level.	GHSGT: % of students at Pass Plus	11	Social Studies	36% Dual QCC & GPS	34% Dual QCC & GPS	36%			48%		
		EOCT: % of students at Exceeds	U.S. History GPS		17%	25%+	31%+			29%		
			Econ. GPS		13%	28%+	36%+			25%		
		GHSGT: % of students Passing	11		85%	85%	77%					
		EOCT: % of students Passing	U.S. History		71%	67%+	62%+					
			Econ.		61%	79%+	84%+					

Dark Green indicates 2012 goal met.

Blue indicates goal for 2012 not met but equal to or greater than 3% increase over previous year.

Yellow indicates goal for 2012 not met and  $\pm 2\%$  change from previous year.

Red indicates  $\geq 3\%$  decrease in achievement from previous year.

+Indicates GHS GT above state average.

\*indicates tied with the state average.

Goal Area	Performance Objective	Performance Indicator	Grade	Subject	2008 GPS	2009 GPS	2010 GPS	2011 GPS	2012 GPS	Goal 2012
Student Achievement	By Spring, 2012, EJCHS will increase the percentage of students exceeding proficiency standards by 12% in every academic area by grade level.	Georgia High School Writing Assessment: % of students scoring "Exceeds"	11	Writing	5%	11%+	10%			17%
		Georgia High School Writing Assessment: % of students passing	11		85%	91%*	91%			

Dark Green indicates 2012 goal met.

Blue indicates goal for 2012 not met but equal to or greater than 3% increase over previous year.

Yellow indicates goal for 2012 not met and  $\pm 2\%$  change from previous year.

Red indicates  $\geq 3\%$  decrease in achievement from previous year.

+Indicates GHS GT above state average.

\*indicates tied with the state average.

Goal Area	Performance Objective	Performance Indicator	Grade	Subject	2008	2009	2010	2011	2012	Goal 2012
Student Achievement	By Spring 2012, EJCHS students will increase the percentage of Students with Disabilities passing English Language Arts and Mathematics by 10%	GHS GT: % of students passing	11	Engl. Lang. Arts	53%	71%+	38%			63%
		GHS GT: % of students passing	11	Mathematics	43%	72%+	45%			53%

# Attendance Data

Goal Area	Performance Objective	Performance Indicator	Identifier	2008	2009	2010	2011	2012
Citizenship	EJCHS will decrease the percentage annually of students who miss 15 or more days per school year.	% of students who missed 15 or more days	All	12.9% (127)	9.6% (101)	10.4% (114)		
			Asian	0% (0)	0% (0)	0% (0)		
			Black	7.9% (6)	6.1% (5)	9.6% (8)		
			Hispanic	20% (11)	10.5% (6)	10.5% (8)		
			White	12.9% (107)	10.3% (90)	11.2% (98)		
			SWD	18% (31)	13.1% (21)	12.8% (23)		
			ELL	19% (4)	4.3% (1)	4.3% (1)		
			Economically Disadvantaged	17.8% (76)	13.7% (76)	14.5% (96)		
	EJCHS monthly attendance will meet or exceed 95%	Average monthly attendance	ALL	94.53%	95.32%	95.004%		

# Discipline Data

Goal Area	Performance Objective	Performance Indicator	Identifier	07-08	08-09	09-10
Citizenship	Discipline referrals resulting in out of school suspension will decrease by 3% each year.	The number of students suspended out of school will decrease by 3% each year.	ALL	<p>16%</p> <p>139 students suspended out of school Oct. FTE = 891</p>	<p>8.4%</p> <p>82 students suspended out of school Oct. FTE = 976</p>	<p>8.3%</p> <p>83 students suspended out of school Oct FTE = 995</p>

# Communication Data

Goal Area	Performance Objective	Performance Indicator	Identifier	07-08	08-09	09-10	10-11	11-12
Communication	Improve communication among parents, community, staff, and administration	Parent logins on Infinite Campus	Number of logins	17026	34138	38012		
		Subscriptions to Monday Message – email newsletter	Number of Subscriptions	N/A	N/A	233	504	

# Community Involvement & Communication

- Phone Service
- Monday Message
- Parent Nights –
  - *1<sup>st</sup> and 2<sup>nd</sup> Semester Open Houses*
  - *ELL Parent Nights*
  - *GHS GT Parent Night*
  - *Middle School Parent Nights*
  - *Advisement*
  - *“At Risk Student” Nights*
- TAA Student Led Conferences
- Mentoring Programs with Feeder Schools
- Community Pep Rallies
- Community Performances – Fine Arts & CTAE
- School Council
- Partners in Education
- Jackson County Relay for Life
- Booster Clubs
- Jumbo-Tron

# EJCHS Celebrations

- Eagle Express graduated 17 students.
- GHSGT
  - Increased the percentage of students scoring Advanced Proficiency/Honors on every GHSGT content area.
  - 7 Perfect Scores on the GHSGT & GHSWT
- Scored above the state on 5 of the 8 EOCTs in the exceeds category.
- Increased intervention efforts.
- Decreased the percentage of 9<sup>th</sup> graders retained.
- Increase in differentiated instruction and use of best practices in classroom instruction.
- Increase in teacher acknowledgements at both the RESA and state levels.
- New Family Members - Benton and Maysville Elementary have joined the Eagle Nation.

## **Targeted Areas for Improvement**

- **Graduation Rate**
- **GHSGT**
  - Increase percent of all students scoring exceeds on all portions of the GHSGT
  - Decrease failure rate on the GHSGT
- **Student Engagement**

## **How will we improve?**

- **Targeted/Differentiated Interventions**
  - Power of “I”
  - Read 180 & Performance Series
  - Review Sessions – Individualized and Prescriptive
  - Parent Contacts
  - Wednesday Interventions
- **Professional Learning & Teacher Collaboration**
  - Vertical Teams
  - Content/Curriculum Review Teams
  - Differentiated School Based Prof. Learning
  - Departmental PLC’s & Data Teams

